



The Children's School at Filadelfia



$$2 + 2 = _$$

12 (3)

Who are we?



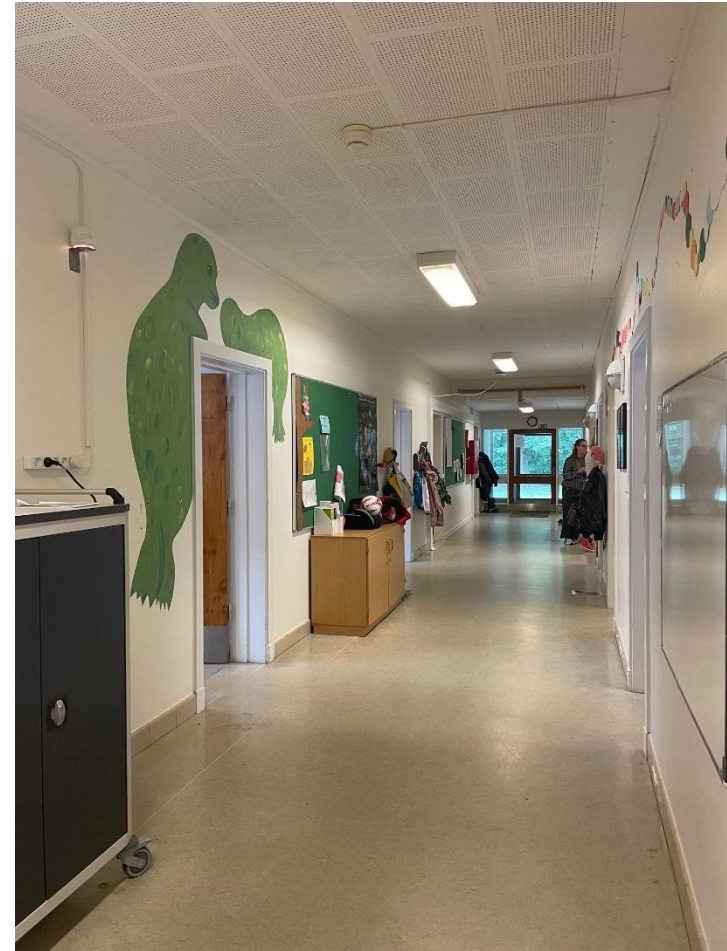
- From Denmark: Mette Christensen and Nina Langfeldt Conradsen.
- A part of Filadelfia, the only – and highly specialized – epilepsy hospital in Denmark.
- A national centre of competence and a regional specials school for children with epilepsy or other cognitive disabilities such as ADHD or ASD.
- 27 employees at the school.
- 725 overall at Filadelfia.



Special needs education and patient/school assessments

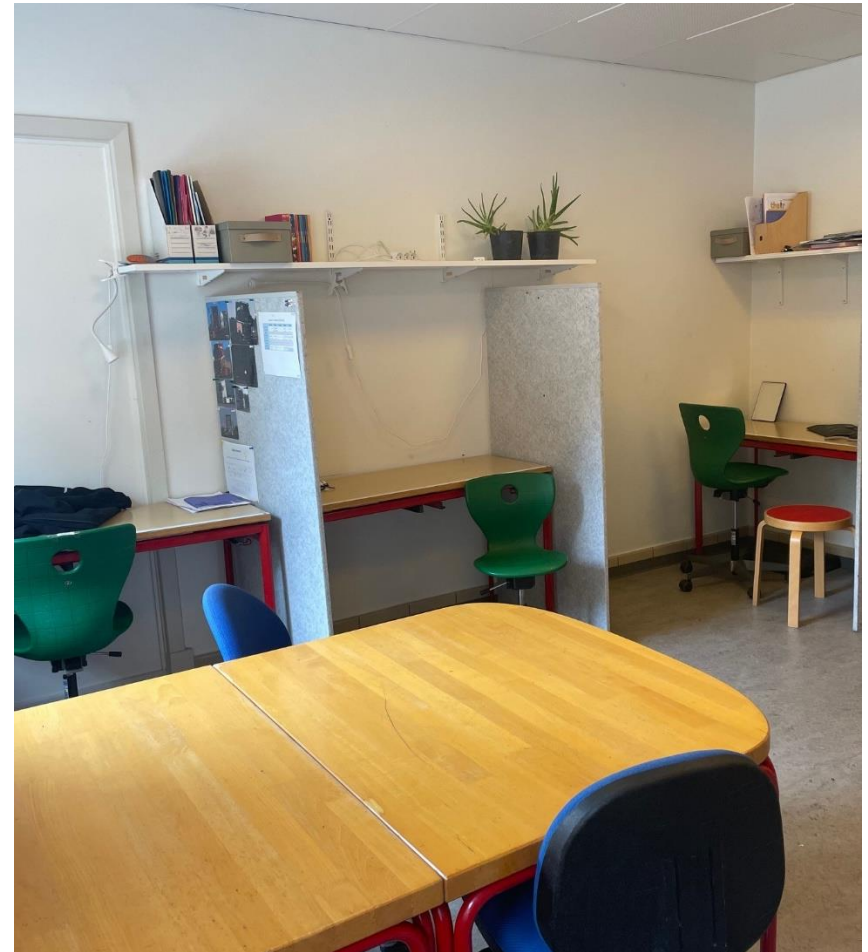
3 target groups:

- Regular pupils (47)
- Hospital teaching (800 annually)
- Patient assessments (110 annually)



How are we organised?

- 8 classes from 1-10th grade
- STU: individually organised youth education (5)
- Small classes (4-5 children)
- 3-4 teachers/pedagogues for 2 classes
- We teach the same curriculum as the Danish elementary school – and yet...



A day at The Children's school



- School days begin at 8.30 AM and ends at 14 PM.
- Visual structure
- Scaffolded assignments
- School work in timeslots of 20 min.
- Brain Breaks
- Time Timer
- "Quit time" after each recess



A day at The Children's school

Sanseovervældelse og opladningsbehov



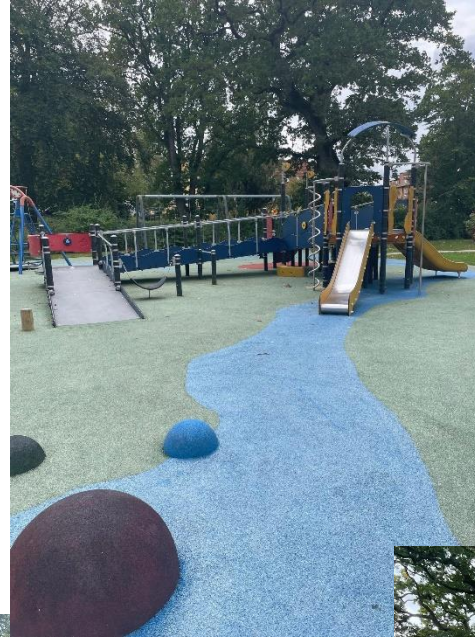
FACE:IT

- Daily check-in in the morning
- Brain battery and stress reducing
- The balance between being social and being alone



Our outdoor facilities

- Playground of 2400 m2



How does the Danish school system cope with SEN pupils?

The law of inclusion (2012): *“Children with special needs should, as far as possible, be taught together with their peers in regular education with the necessary support and tools”.*

- 2014: 94,4% of all pupils were in the Danish elementary school.
- By 2015: A goal of 96% (maximum 4 % of all children in special schools).
- Maximum 28 pupils per class.
- SEN pupils in the need of less than 9 hours/12 lessons per week → included in their home schools
- PPR: educational psychological counseling
- PPV: educational psychological evaluation



Degree of inclusion

Tabel 1: Inklusionsgrad og antal elever i kommunale specialtilbud/specialklasser

	2019/20	2020/21	2021/22	2022/23	2023/24
Antal elever i segregerede specialundervisningstilbud	31.387	32.594	33.917	35.929	36.152
Antal elever i kommunale skoletilbud i alt	543.044	533.967	526.822	527.190	523.108
Inklusionsgrad	94,2%	93,9%	93,6%	93,2%	93,1%

Note: Inklusionsgraden er andelen af elever, der går i den almindelige undervisning og ikke er henvist til specialundervisning i segregerede specialundervisningstilbud. Inklusionsgraden opgøres for de kommunale skoletilbud 'Folkeskoler', 'Specialskoler for børn', 'Behandlings- og specialundervisningstilbud', 'Specialundervisningstilbud på børne- og ungehjem' og 'Kommunale ungdomsskoler og ungdomskostskoler'.

Kilde: Danmarks Statistiks elevregister bearbejdet af Styrelsen for It og Læring.



Degree of inclusion on classes

Tabel 2: Inklusionsgrad fordelt på klassetrin i 2023/2024

Klassetrin	Inklusionsgrad
0. klasse	96,2%
1. klasse	95,5%
2. klasse	94,9%
3. klasse	94,3%
4. klasse	93,9%
5. klasse	93,1%
6. klasse	92,4%
7. klasse	91,7%
8. klasse	91,2%
9. klasse	90,4%
10. klasse	82,7%
Total	93,1%

Note: Inklusionsgraden er andelen af elever, der går i den almindelige undervisning og ikke er henvist til specialundervisning i segregerede specialundervisningstilbud. Inklusionsgraden opgøres for de kommunale skoletilbud 'Folkeskoler', 'Specialskoler for børn', 'Behandlings- og specialundervisningstilbud', 'Specialundervisningstilbud på børne- og ungehjem' og 'Kommunale ungdomsskoler og ungdomskostskoler'.

Kilde: Danmarks Statistiks elevregister bearbejdet af Styrelsen for It og Læring.



SPS – special educational support

- Support for pupils and students who have a physical, psychological or neurological disability and need support in order to complete their education on equal terms as their peers.
- E.g a student with dyslexia can get IT aids.
- 2021: Epilepsy was included on the list of neurological disabilities.
- Everyone knows what ADHD and autism is! Not as many know what epilepsy is.

EKSEMPLER PÅ STØTTE TIL DIG MED PSYKISK ELLER NEUROLOGISK FUNKTIONSNEDSÆTTELSE


Ekstra tid til
eksamen


Studiementor
(studerende)

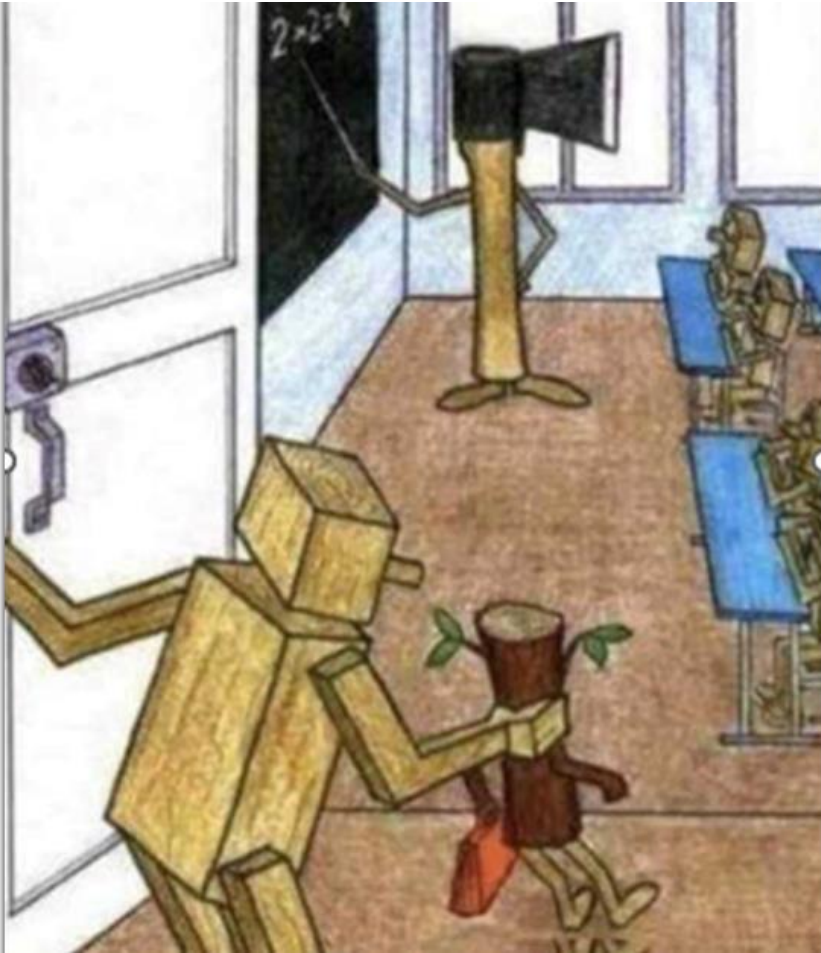

Studiestøttetimer
(psykolog/rådgiver)


Hjælpemidler


Faglig støttelærer
(underviser)



The future for SEN pupils?



- Everyone should learn the same thing at the same time in the same way...
- Is this the right way to go?
- How many children fall through the net?
- Children who don't disrupt the peace and order of the school goes under the radar - e.g children with externalizing behaviour problems often "get the attention".

B

Ø

R N

S

K

O

E

E

L

N

Autisme er Min Superkraft



U



Bla Bla Bla Bla...
Kú vi ikke lige

MILADELIA